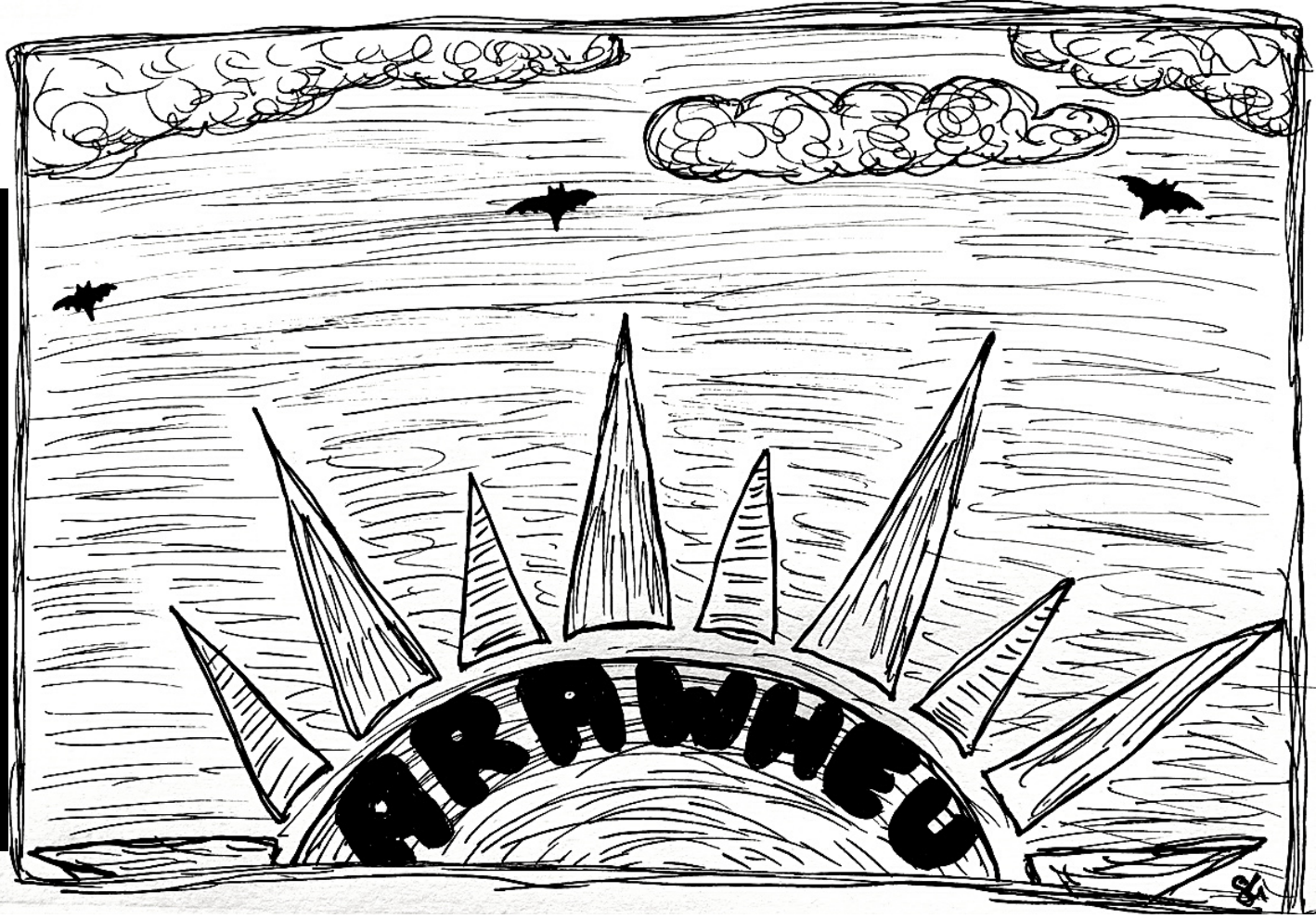


JAN - MARCH 2022



BATS Theatre
1 Kent Tce
Wellington

GUANO 102

A poem by Anne-Lisa Noordover

An ode to the artists.

Living under clouds that move like race horses.

Walking amidst high rise apartments we can't afford.

This is an ode to the artists.

To a lonely trumpet tune carried through a flakey window on Wigan.

To Phantom Billstickers reminding us we walk amongst giants.

To diaries with more show dates crossed out than remaining.

To spectacular ideas discussed over tables with \$6 coffees.

To hospo paper towels taken home for pepermache.

To the 2am workers, your solace in the shadows.

To bedroom floors and drawers lined with pages,

an exhibition no one sees but everyone should.

To the smiles, tears and longing painted on > \$100,000 earning patrons,

who complain about \$18 tickets while leaving in olas.

To the jacket you finally managed to buy and wore to a friends gig,

bear hugging them in it afterwards.

To those who carry guilt for leaving, pain for having to,

having no choice left, left bereft, bereft and bruised.

You are still an artist. Be kind to yourself.

This is an ode to the artists.

To remind you.

You belong in this wonderful city that is;

often not on your side,

nor has space for you to reside.

You may feel like you're walked all over,

but being the paving stones means,

not only are you foundational baby,

you are not alone.

Held snug among many others right beside you.

We are the music,

the color,

the emotion,

and storytelling.

We are the dreaming.

The spaces which transcend us.

The past and the future.

The humanity,

mystery,

mayhem,

madness.

And voice.

We are the window,

the gaze,

that says I see you, stay awhile.

You are seen.

You are the heart and soul of this city.

It's not your fault,

humans forget to be conscious of their own hearts beating at times.

**WANT TO FEATURE IN THE NEXT GUANO? SEND YOUR SHORT
FICTION/NONFICTION AND VISUAL DESIGNS THROUGH TO
STEVIE@BATS.CONZ**

KIA ORA E TE WHĀNAU!

Wow - 2021 is very almost done and I imagine, like all of us here at BATS, you're ready for a break. What a blimmin year! One we entered somewhat naively, hoping all this COVID stuff would be over with. We now know better.

As we look ahead to 2022 at BATS it's tricky writing something that will be relevant by the time you see this - especially when we are currently on the precipice of implementing the Traffic Light System.

So we hope this finds you well, rested and safe after Kirihimete. We hope beyond everything that we're still at orange and that COVID-19 isn't overwhelming our health systems. We hope we're able to reopen as usual. We hope we can look forward to Six Degrees Festival and Fringe Festival without too much trepidation. We hope that we can continue to bring artists and audiences together safely.

So here's to a new year and hopefully a more easeful year than we've had recently. Here's to welcoming our friends and family back to BATS!

Nā,
Te whānau at BATS

SIX DEGREES FESTIVAL



THE PRINCESS AND THE KNIGHT

JAN 25-29 | 12PM & 2PM

With trouble lurking around every corner, how will Princess Ada and Prince Lysander ever have the wedding of their dreams?! When a mysterious knight appears, Ada begins to question everything she knows about true love...

Inconceivable Productions presents the break-out piece from writer Brie Keatley, *The Princess and the Knight*. Designed to broaden horizons and tug on the heart-strings, this LGBTQIA+-friendly play is sure to be a barrel of laughs fit for the whole family!

Made in association with Six Degrees Festival.



PAPER JAM IMAGINARIES THEATRE

JAN 25-29 | 6PM | \$15/\$20

Sal is stuck in a rut. A boring cycle of get up, go to work, go home, go to sleep. Up, work, home, sleep. Upworkhomesleepupworkhomeslep ep.

Her job is an endless sea of pointless data entry and double handling. Every day the same. Every day adulting. Every. Day. D U L L.

Until her thought-to-be-long-gone childhood friend, Biscuit, shows up out of the blue.

They're unpredictable, wild and... Imaginary.

Things are going to get weird.

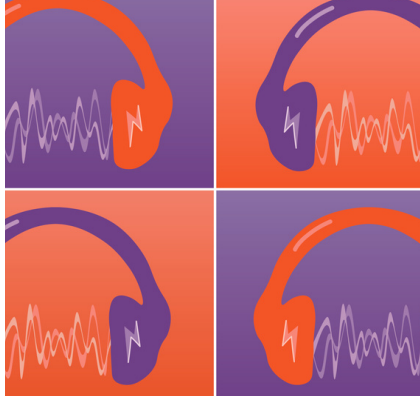


YOU'D LOOK SO PRETTY IF

JAN 25-29 | 8PM | \$15/\$20

You'd look so pretty if you smiled, or you wore makeup. If you showed off your legs, or you just made more of a damn effort. Sounds familiar, doesn't it? You'd Look So Pretty If, a devised show from Stain Your Brain Productions, set to debut this year in the 6 Degrees Festival. This is a provocative, horrific, comedic and contemporary performance, that will leave you feeling contemplative, and ready to scream.

With a cast and crew consisting of female and non-binary folk, we've created a performance which confronts the issues around the objectification of femininity.



Six live podcast shows!

Each night a different show!

Live music!

Lots of Cables!

We'll be having a cozy time of it in the Studio at BATS with a whole heaping of good vibes and audio goodness!

Can't make it in person?

Catch us on the livestream!

LISTEN TO THIS: LIVE PODCASTS

JAN 27-FEB 5 | 8.30PM | \$15/\$20



Heartbreaker Productions present an adapted version of Susan's Glaspell's one act play 'Trifles', a dark comedy set in Kaitangata putting women at the centre of the true crime genre.

A violent crime has occurred in the house of John and Sharon Wright, and Sharon is the main suspect. While Kaitangata locals Samantha and Angela gather Sharon's things, they accidentally discover the truth about what really happened, and perhaps a few truths about themselves along the way. Join us for a cuppa as the mystery unfolds.

T R I F L E S

FEB 1-5 | 6 PM | \$15 / \$20



War trauma defines returning soldier Jess's life. To escape her pain, she begins experimental virtual reality therapy where she builds a breathtaking world and slowly repairs wounds past and present as she heal her relationships, her life and herself. Small moments carry huge emotional punch in this compelling, honest, and moving story of courage and resilience. Recently discharged soldier, Jess (Harriet Prebble), returns home physically and emotionally scarred after her third tour of Afghanistan.

UGLY LIES THE BONE

FEB 1-5 | 8 PM | \$18 / \$22

SIX DEGREES FESTIVAL



SPECTRAL HAZE

A delicious hazy IPA
brewed to support our
mates at BATS Theatre

Just what's needed to
raise the spirits

GARAGE
ARO ST
WELLINGTON
PROJECT



Kia ora – vaccine pass
required for entry



Wear a face covering



Scan in

Find out more at [Covid19.govt.nz](https://www.covid19.govt.nz)



THIRD PARTY A DEBUT SEASON

FEB 10-12 | 7PM | \$14/\$18

Third Party – The Debut presents the improvisational stylings of Improv Connection's most experienced performers: Ben Jardine, Jonathan Mandeno, Kathryn Fitzpatrick, Liz Butler, Max Porozny, Pája Neuhöferová, and Tristram Domican.

With credits in Maximum Benefit, Hall Monitors, The Yellow Wallpaper, Wellington Improv Troupe, and a slew of successful New Zealand Improv Festival shows, they are ready to combine forces in their premiere performance.

Directed and coached by Malcolm Morrison, Third Party is ready to deliver you engaging, dramatic, and gut-wrenchingly funny unscripted theatre the likes of which are only witnessed once—and never seen again!



GIVE REGULARLY

BE EXCLUSIV

...that you're ready to take our relationship to
...together we can keep BATS Theatre accessible
...and artists! Going steady with BATS will make a
...e. With a monthly donation, you will compi
...ation of theatre and changemakers

**LAUNCHING THIS
VALENTINE'S DAY
COME CELEBRATE
LOVE AT BATS!**

LET
BE THE
I'VE G

LET
STeady

Card
Card Number:
Expiry:
CVV:

Direct Deposit

06-615-0215289-00

Please let us know about your
donation by emailing
book@bats.co.nz and name your
donation so it's easy to find.

Choose where your regular donation goes:

Keep ticket prices low for everyone

We're proud of our accessible ticket prices for all. BATS
would have charged \$150 a ticket without donations,
...ants...unding

Keep our artists happy

BATS pays for our artists. We support our artists by
...ding ticketing, marketing, amenities, workshop
...identie and technical support at no charge to artists.

Buy the BATS \$2 lolly mixture at \$2 for all

...ve you seen how many lollies are in that bag? Help us
keep it that way!



W E L L I N G T O N N Z

FRINGE

A R T S F E S T I V A L

FEBRUARY 18 — MARCH 12

FRINGE AT BATS 2022



BATS theatre // 1 kent tce // book @ bats.co.nz

	mon	tue	wed	thu	fri	sat	sun	mon	tue	wed	thu	fri	sat	sun
	14	15	16	17	18	19	20	21	22	23	24	25	26	27
5.30 in the studio				A.i.Catfish <small>(15min runtime, shows till 8.30)</small>										
6.00 in the stage				The Anti				BREAKFAST TIME		I KNOW YOU, FISH				
6.30 in the dome	SUBLIME INTERLUDES			Randy Feltface				BEING PREY			GHOST SHOW			
8.30 in the stage				Randy Feltface				Presenting ... The Tiwhas			AS SEEN ON TV			
9.00 in the dome				Randy Feltface				LOOPS			BACK TO SQUARE ONE?		<small>Scrags O'Possum & The Penultimate Hitch</small>	
	mon	tue	wed	thu	fri	sat	sun	mon	tue	wed	thu	fri	sat	sun
	28	1	2	3	4	5	6	7	8	9	10	11	12	13
6.00 in the stage		SHIFT YOUR PARADIGM		RATFACE	SCATTERGUN				RATFACE		Smash It Bro			
6.30 in the dome		WENDYBIRD			Music Sounds Better Out Here				SONDER			STRANDED PIECES		
8.30 in the stage		AS SEEN ON TV	H.Y.P.E. <small>How You Perceive Energy</small>		SHAPING UP	MAXIMUM BENEFIT	THE KING OF TAKING		THE KING OF TAKING			SHAPING UP	MAXIMUM BENEFIT	
9.00 in the dome		<small>Scrags O'Possum & The Penultimate Hitch</small>		BOYS WAKE UP					RAW ASMR		This is NOT Musical Theatre			

W E L L I N G T O N N Z

FRINGE

A R T S F E S T I V A L

FEBRUARY 18 — MARCH 12



anti-
/anti/
prefix: anti-; prefix: ant-
1.
opposed to; against.
"anti-aircraft"
preventing.
"antibacterial"
relieving.
"antipruritic"
the opposite of.
"anticlimax"
acting as a rival.
"antipope"
unlike the conventional form.
"anti-hero"
Wellington Young Actors
premiere their short devised
plays. Winners of Spectacular
Organised Chaos (Puberty: The
Musical, NZFringe 2020)

T H E A N T I

FEB 18-20 | 6PM | \$18/\$14



S U B L I M E I N T E R L U D E S

FEB 16-20 | 6.30PM | \$15/\$20

This performance is an exploration of human fears and phobias, with an effort to forge connectedness and support when we can feel extremely disconnected and lost.

It is an acknowledgement of the highs and lows we experience as humans, the breath between fear and release.



A . I . C A T F I S H

FEB 19-20 | 5.30PM | \$18/\$14

Am I real? Are you real? How can you tell? Especially in social networks online - Maybe Artificial Intelligence is smart enough to fool you.. So what happens when we're all in the metaverse and can't be sure of anything anymore... A.i.Catfish is a mixed VR Show / Psych Research - An immersive study of what it's like to meet and chat with A.i.. No participants with a history of migraines or Epilepsy. Consent to have data recorded. R18 (no nudity or crass content)]



Some ingredients just don't go well together - Breakfast Time is a multimedia project; you are invited to watch a short film, as two step siblings cook breakfast the morning after a hasty wedding.

After, you are swept into a highly abstract and analytical deconstruction of the world and characters, as breakfast is cooked once again.

Breakfast Time is food for thought.

BREAKFAST TIME

FEB 22-24 | 6PM | \$15/\$20



BEING PREY

FEB 22-25 | 6.30PM | \$18/\$22

A solo show about watching yourself being eaten alive.

Come along on this potentially-dangerous-possibly-moving-definitely-mad romp of a show as we attempt to unpack the limits of our humanity in the face of death.

Inspired by a true blue story.



Jthan Morgan fronts Wellington's new favourite drag girl group, **The Tiwhas**. Made up of local takatāpui performers, **The Tiwhas**, are here to slay - performing hit songs with live vocals and choreography.

A fun filled, entertaining evening of takatāpui drag excellence! All your favourite hits from the 70s til today!

PRESENTING... THE TIWHAS

FEB 22 - 24 | 8.30PM | \$22/\$18



"Insanity is doing the same thing over and over and expecting a different result"

Loops is a multi-disciplinary performance piece about the frustrations and repercussions of trying to make a career in the arts, explored through live sound & aerial art.

LOOPS

FEB 22-24 | 8.30PM | \$22/\$18

This is for the artists who are stuck in a loop and are not sure how to break out.



The combination of sharks, idioms, fish flakes, nightclub bathrooms, thoughts, feelings, and words that make up Geneveva: Spoiler alert: she's a fish.

Maybe after this, you'll understand why.

I Know You, Fish is a dark, absurd solo comedy using AV, Epic theatre, and poetic language directed at the audience as an intentionally performative metaphor for the honest, relatable content beneath.

I KNOW YOU, FISH

FEB 25-27 | 6PM | \$15/\$20



AS SEEN ON TV

FEB 25-MAR 1 | 8PM | \$15/\$20

Please Laugh presents a new sketch comedy show that answers all your questions:

- Why can't you point the boom mic upwards?
- How do I become a billionaire businessman?
- Why doesn't Mr. Potato Head have a plastic dick?

We have the answers, you got the dosh.



The Rebel Alliance invites you into 95 year old Inga's living room in Denmark as she reaches out through space and time to her grandson in New Zealand.

Sometimes all you need is an old lady to set you straight.

It's theatre, but only just!

BACK TO SQUARE ONE?

FEB 26-27 | 8.30PM | \$22/\$18



A new queer comedy musical about the perils of love, cheap secondhand toasters, and waiting until it's too late. Guano Blurb When Eliza becomes a ghost after a fatal run-in with a toaster, she has to figure out how to confess her love to Violet, her intelligent, dreamy, and totally alive flatmate. An epic tale of gay ghost romance with the help of song, dance, and spooky new friends

THE GHOST SHOW

FEB 26-27 | 6.30PM | \$20/\$15



You can't hitch 35,000km across 3 continents without having a few stories to tell.

Join Scraggs O'Possum, hitchhiking extraordinaire, as they share tales of tribulation, triumph, and all-around temerarious behaviour on the open road.

Thumbs out, baby!

SCRAGGS O'POSSUM & THE PENULTIMATE HITCH

FEB 27-MAR 2 | 8.30PM | \$15/\$20



SHIFT YOUR PARADIGM - NO CHAIRS REQUIRED

MAR 1-3 | 6PM | \$15/\$20

Do you want to get more out of life? Are you tired of lower back pain and poor cushion support?

Well, in just one hour with me I'll teach you about a whole new way to sit. Doctors hate me, and chiropractors fear me; what I can give to you will make their jobs a thing of the past. Besides, if a pyramid scheme is so bad then why is a triangle the strongest shape?



Hello darling, it's awfully nice to see you. I have a bit of a naughty story to tell you.

Something just a little bit cheeky before you pop off to bed.

People don't realise that I was so much more than Peter Pan's damsel in distress... but we'll change that.

WENDY BIRD

MAR 1-3 | 8.30PM | \$20/\$15



H.Y.P.E (HOW YOU PERCEIVE ENERGY)

MAR 2-3 | 8PM | \$20/\$15

Can you see the energy created by the strength and vitality sustained through physical movement? In this world, we are pursuing an emotive journey through energies created by music and physical movement. Can you see it radiating? Presented by UKU, 4 highly skilled artists collaborate and perform in a highly physical dance work created by Airu Matsuda 懂祈 松田.



What happens when you mix four high school lads, too much to drink, and the Rimutaka Hills?



Boys Wake Up! addresses the 40% of fatal road accidents involving alcohol and drugs, the high numbers of youth involved in these accidents, and the link our binge drinking culture has to toxic masculinity.

BOYS WAKE UP!

MAR 3-6 | 8.30PM | \$15/\$20



An experimental solo body of work starring Sean and exploring duality; particularly what it means to simultaneously be predator and prey, and how that duality is used for personal betterment. Every day we better ourselves: our patience, understanding, and the part of ourselves that wants to be a better person, prey's upon the corners of us that harbour prejudice, irrationality in attempts to break down that which we have been coded, consciously or otherwise.

RATFACE

MAR 4-9 | 6PM | \$15/\$20



When our writer / performer Robert (Jack) McGee was nineteen, he walked up the highway, from Wellington to Auckland.

Armed with a pedal-powered-treadmill and beautiful live music, this show captures the highs and lows of that adventure. Initially, it's a funny, personal, and uniquely New Zealand adventure story.

MUSIC SOUNDS BETTER OUT HERE

MAR 4-6 | 6.30PM | \$20/\$15



Ever been put in a corner? Squared off against your rival? Entangled in a love triangle? Had a rhombus time with your mates? Third Party presents Shaping Up! A fun, fast-paced improvised show where chance not only determines the shape of the stories, but the space where improvisors may perform them! Will you see a heart-breaking tale of lovers separated by a chasm, or an uncomfortable at meeting in a broom cupboard?

SHAPING UP!

MAR 4-11 | 8PM | \$20/\$15



Agnes.
26.
Millennial Māori.
Talking to a kehua.
Seeking transcendence.
Poetry, verbatim,
waiata.

SCATTERGUN

MAR 5-6 | 6PM | \$15/\$20 Bless Up



MAXIMUM BENEFIT

MAR 5 & 12 | 8PM | \$15/\$20

What happens when you get two best friends together and have them perform a comedy show that's all made up entirely on-the-spot? Loveable characters? Fun and unique stories? Quick and witty shenanigans? All of the above, it turns out. Maximum Benefit is a two-person improv comedy show featuring two best pals Max Porozny and Ben Jardine. From an audience suggestion, Max and Ben spin a unique tale that features fresh characters, plots, stakes, hahas, awws, and more!



A royal physical comedy so new it's not finished.

The *King of Taking* at BATS is a development season for a new work by Kallo Collective and Thom Monckton.

A petulant and childish king is presented gifts by his subjects (you) and he reacts accordingly.

THE KING OF TAKING - A DEVELOPMENT

MAR 6-10 | 8PM | \$18/\$14



"Sonder. The sudden realisation that every person lives a life as complex as your own."

Be the extra in the coffee shop, the onlooker on the street.

SONDER

MAR 8-10 | 6.30PM | \$20/\$15

Follow what interests you and witness everything daily life has to offer. This is people-watching at its peak.



whisper Hello little peaches. Welcome back to my channel. It's Letitia Lickkit... lick it. Discover your Tingle Immunity at this new fruity bouffon comedy about ASMR by award winning actor Amy Atkins. Bouffon is the art of taking down the bastards, and this show will sink its teeth into the bastards in and around ASMR and Mukbung YouTube culture! Bring your own Headphones and Smart Device for Guaranteed Brain Tingles.

RAW! ASMR

MAR 8-9 | 8.30PM | \$18/\$22



SMASH IT BRO!

MAR 10-12 | 6PM | \$15/\$20

For a devastating comedy, with frightfully hilarious twists and turns, come and experience Smash It Bro!

A show that follows two deadbeat friends who shortly after entering, find themselves locked in a shed.

With nothing but time, the pair slowly unhinge and divulge into chaos.



Hey, you! It's your friendly neighbourhood Auckland, Patrick! Listen, I want to bring a revue-style show to the festival - a work in progress, if you will - but I need a little bit of feedback on the content. I'm hosting a rehearsal with India and the band; please feel free to stop in and help us craft our ideas into something! If you're a musical theatre nerd, come. If you're NOT a musical theatre nerd, absolutely come. P.S It'll be groundbreaking art.

THIS IS NOT MUSICAL THEATRE

MAR 10-12 | 8.30PM | \$20/\$15



STRANDED PIECES

MAR 11-12 | 6.30PM | \$20/\$15

An experimental dance work exploring the unsteady and conflicted space we are in during this time of isolated crisis.

Striving to connect the 'stranded pieces' through innate and holistic efforts.

Inspired by Matt Pine's relation to land in his work.

ABOUT BATS

BATS Theatre is a not-for-profit theatre that aims to light up lives with live art. For over 30 years BATS has nourished various artistic communities, played a key role in developing new creative voices in Aotearoa, launched many successful careers, and become a second home for people on and off stage.

Join us in our mission to create safe spaces for artists and audiences to expand possibilities. BATS has always been the place to take a risk, so why not check out what's coming up... see bats.co.nz for more info.

GIVE TO BATS

BATS Theatre is a charitable trust with a mission to light up lives. All donations go towards providing resources for artists to make live art. When you make a donation to BATS you're directly helping artists.

BATS.CO.NZ



SCAN ME

KEEP CONNECTED



BATS.CO.NZ



04 802 4175



[@BATS_THEATRE](https://www.instagram.com/BATS_THEATRE)



[BATSTHEATRE](https://www.facebook.com/BATSTHEATRE)



[@BATS_THEATRE](https://twitter.com/BATS_THEATRE)



[SUBSCRIBE TO BATSMAIL
AT BATS.CO.NZ](mailto:SUBSCRIBE@BATSMAIL.CO.NZ)

INTRODUCING THE DIFFERENCE

The Difference ticket type is for those who **CAN** afford more and **WANT** more money to go directly to our artists. At \$40 per ticket 'The Difference' ticket does what it says it does - makes a bloody big difference to the sustainability of our artists' careers.

Thank you for supporting our artists!

MOKOMOKO

#YesWeAreGoingThere



17-27 MARCH
AT 6.30PM

MADE WITH THE
SUPPORT
OF BATS'
CO-PRO
2022



A BATS Co-Pro



M O K O M O K O

MAR 17 - 26 | 6.30PM | \$20 / \$25

How do you heal from intergenerational trauma as the result of a genocide that people refuse to acknowledge?

Asking for a friend...

Moko is stuck between a rock and a hard place. She feels that a stronger grounding in her identity will help her heal from personal trauma, but the more she learns, the more she finds there's so much more work to do.

Join Moko on her quest to discover the truth of her origin story, and help her to stay on the path to becoming the wāhine toa she was born to be.



WE'VE SIGNED UP WITH SWITCH YOUR SPEND!

BATS receives 50% of the profit (15% of the total price) when you buy your EcoStore and Only Good products online with Switch Your Spend.

This is a cool and groovy way to support BATS while you do your shopping!

Head to: <https://www.switchyourspend.co.nz/shop/>



DOOM & BLOOM: COCKATRICE

MAR 18 | 7 P M
| \$ 1 5 / \$ 2 0

Like the parents of a cockatrice – the mythical creature with two distinct animals as parents – BATS' long-time comedy duo Doom & Bloom bring to life a unique hybrid of two audience members' stories.

Made up entirely on the spot, there is no telling what the power of the hybrid will be... other than unexpected, hilarious, and quite possibly touching.

Late Night Knife Fight is the monthly improv battle where three teams face off in a fight for glory, honour, and the audience's favour.

The winner returns in the headline spot next month; the losers wail and gnash their teeth.

We bring the knives. You bring the judgement.



LATE NIGHT KNIFE FIGHT

MAR 19 | 8.30PM | \$18/\$22



T I N Y D O G

MAR 18 | 10 P M |
\$ 1 4 / \$ 1 8

All comedy, no bite. Tiny Dog is Te Whanganui-a-Tara's fierce new improv company. Expect the unexpected with a night of fast and loose improvised comedy.

Come along and see some of Wellington's top-of-their-game comedians at their silliest.

Fetch your tickets quick. Woof. Woof.





DR DRAMA MAKES A SHOW

MAR 29-APR 1 | TIMES VARY | \$20/\$25

When Dr Drama makes a show, expect the unconventional.

Using comedic storytelling, multimedia & dance, James Wenley unpacks masculinity, performance & whiteness.

Enrol now for an intellectually stimulating and thoroughly entertaining academic journey.



DR DRAMA MAKES A SHOW WITH YOU

MAR 30-APR 2 | TIMES VARY | \$25/\$20

Learn about the social origins of dramatic performance, browse Dr Drama's collection of theatre programmes, and collaborate with fellow audience members to create your own unique performance.

A fun and highly interactive theatre experience.



J E Z & J A C E

MAR 30-APR 2 | 8PM | \$18/\$14

Toxic masculinity has never looked this hot.
Bring you Speights and your mates for this fucking banger of a show.

Jez & Jace will take you on a journey through the highs and lows of a white bogan's life.
Featuring performances from Nina Hogg, Megan Connolly and directed by Austin Harrison.

What happens when you really put your bros before your hoes? #nohomo

RADIO ACTIVE CARD IS BACK!

ONLY \$5/MTH

GET DISCOUNTS AROUND TOWN & MEMBER ONLY GIVEAWAYS WHILST SUPPORTING YOUR STATION

AROVISION • ARO VIDEO • BATS THEATRE
GOOD FORTUNE COFFEE • HAVANA COFFEE
HILLS HATS • MARANUI CAFÉ • MEAN DOSES
MOON 1 • ROXY CINEMA • SKINNY FIZZ
SPLENDID PHOTOGRAPHY • SUBWAY DIXON ST
VIC BOOKS • WIKI GOODS + RADIO ACTIVE MERCH



SCAN THE CODE OR GO TO WWW.RADIOACTIVE.FM TO GET YOURS TODAY

RADIO
ACTIVE
FM 88.6

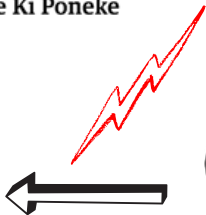
THANK YOU!



**Absolutely Positively
Wellington City Council**
Me Heke Ki Pōneke



creative*nz*
ARTS COUNCIL OF NEW ZEALAND TOI AOTEAROA



MOCKINGBIRD



GARAGE
ARO ST
WELLINGTON
PROJECT



**THE WALLACE
FOUNDATION**



**THE LION
FOUNDATION**

**RADIO
ACTIVE
FM 88.6**

Four Winds
FOUNDATION